



API Pump Type_ OH2

• Type

Centerline Support, Horizontal, Radial Split , Single Stage, Single Suction, Overhung, Heavy Duty Centrifugal Pump

• Standard Range

- Capacity (m³/hr) : To 1,920 (8,454 GPM)
- Total Head (m) : To 380 (1,247 ft)
- Temp (°C) : To 450



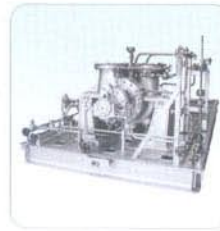
API Pump Type_ BB2(Single Stage)

• Type

Centerline Support, Horizontal, Radial Split , Single Stage, Double Suction, Between Bearing, Heavy Duty Centrifugal Pump

• Standard Range

- Capacity (m³/hr) : To 5,500 (24,217 GPM)
- Total Head (m) : To 550 (1,804 ft)
- Temp (°C) : - 100 ~ 450



API Pump Type_ BB2(Two Stage)

• Type

Centerline Support, Horizontal, Radial Split , Two Stage, Staggered Single or Double Volute, Between Bearing, Heavy Duty Centrifugal Pump

• Standard Range

- Capacity (m³/hr) : To 1,500 (6,605 GPM)
- Total Head (m) : To 550 (1,804 ft)
- Temp (°C) : To 450



API Pump Type_ VS6

• Type

Vertical, Multi Stage with Suction Can, Heavy Duty Centrifugal Pump

• Standard Range

- Capacity (m³/hr) : To 5,500 (24,217 GPM)
- Total Head (m) : To 1,000 (3,281 ft)
- Temp (°C) : To 350



Oil & Gas Solutions



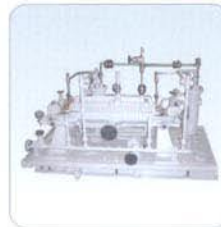
API Pump Type_ BB3

◉ Type

Near Centerline Support, Axial Split Multi Stage, Diffuser Type / Double Volute Type Casing

◉ Standard Range

- Capacity (m³/hr) : To 4,200 (18,493 GPM)
- Total Head (m) : To 1,500 (4,921 ft)
- Temp (°C) : To 205



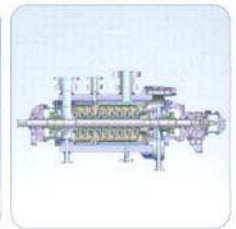
API Pump Type_ BB5

◉ Type

Double Case, Centerline Support, Radial Split, Multi Stage, Diffuser Inner Casing Between Bearing

◉ Standard Range

- Capacity (m³/hr) : As Required
- Total Head (m) : As Required
- Temp (°C) : Up to 450

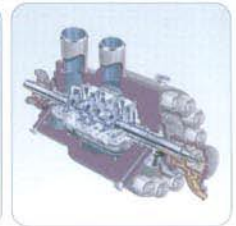


◉ Type

Double Case, Centerline Support, Radial Split, Multi Stage, Volute Inner Casing

◉ Standard Range

- Capacity (m³/hr) : As Required
- Total Head (m) : As Required
- Temp (°C) : To 200



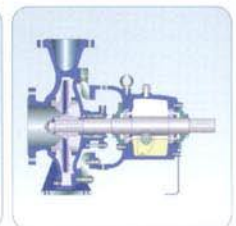
OH1 Type

◉ Type

Foot Mounted Single Stage, Overhung Type Close Semi - Open Impeller

◉ Standard Range

- Capacity (m³/hr) : To 840 (3,700 GPM)
- Total Head (m) : To 140 (460 ft)
- Temp (°C) : - 50 ~ 200



BB1 Type

Type

Axial Split, Single Stage, Between Bearing

Standard Range

- Capacity (m³/hr) : 150 ~ 20,000 (660 ~ 88,000 GPM)
- Total Head (m) : 10 ~ 200 (32 ~ 656 ft)
- Temp (°C) : 0 ~ 90



BB4 Type

Type

Horizontal, Multi Stage, Ring Section

Standard Range

- Capacity (m³/hr) : To 720 (3,170 GPM)
- Total Head (m) : To 2,500 (8,200 ft)
- Temp (°C) : 0 ~ 120



VS1 Type

Type

Vertical Wet Pit Mixed & Axial Flow

Standard Range

- Capacity (m³/hr) : 900 ~ 60,000 (4,000 ~ 264,000 GPM)
- Total Head (m) : 8 ~ 80 (26 ~ 260 ft)
- Temp (°C) : 0 ~ 75



Major Supply Records

End User	Location	Project	Q'ty	Capa. (m ³ /hr)	Head (m)	Temp. (°C)	Power (kW)	Delivery
Sabaco Petrochem.	Saudi Arabia	PDH-PP	43	227	596	128	590	2007
Ibn Zahr (Sabic)	Saudi Arabia	PP	34	190	428	50	260	2007
Ibn Zahr (Sabic)	Saudi Arabia	OCU	19	152	500	90	220	2008
Chevron-Phillips	Saudi Arabia	NCP	43	178	806	50	325	2009
Terna Oil Ref.	Ghana	RFDC	35	296	43	294	55	2000
Patra-SK (Pertamina)	Indonesia	LBO	42	67.3	197	250	110	2007
SK Energy	Korea	FCC	202	1675	52	292	300	2007
KEPCO	Korea	Tengjin	6	1078	3654	176	12000	1997
LG Petrochem.	Korea	Exp.	1	142	1589	147	890	2002
Sohar Power & Desalt	Oman		6	475	1075	125	1900	2005
Samsung TOTAL	Korea	NCC, SM & PP	78	185	1720	147	1220	2007
Kayan (Sabic)	Saudi Arabia	PC	22	1480	40	100	250	2008
SK Energy	Korea	CDU	8	282	156	357	185	2002
GS-Caltex	Korea	RFCC	18	420	114	307	132	1991
BST	Thailand	C4	27	373	95	95	110	1994
Teakwang	Korea	PTA, AN	96	1600	85	262	410	1996
SK Energy	Korea	HDU	4	790	203	315	522	2003
Korea Petrochem.	Korea	PTA	35	1770	98	320	520	1995
Cappo	Taiwan	PTA	18	244	255	144	250	2000
Lotte Petrochem	Korea	NCC, BD & BRU	37	2089	85	39	300	2006
Sibir (Gazprom)	Russia	EB	21	100	472	177	185	2009
Qatar Chemical	Qatar	O-chem II	30	362	91	110	110	2007
Sipchem	Saudi Arabia	Jubeil AC	15	746	127	65	340	2007
ADMA	UAE	Umm Shaif	21	1236	29	64	250	2008

Circulating Water Pump

Feature

Large-capacity vertical type pump to which pull-out type structure can be applied.
Duplex stainless steel applicable

Capacity

Up to 60,000m³/hr (264,200GPM) as standard design



Condensate Extraction Pump

Feature

Vertical barrel casing structure enables to apply in the severe suction condition.

Capacity

To 5,500m³/h (24,200GPM)



Major Supply Records - Korea

Major Customer	Specifications	Unit	Delivery
BUGOK	CDP 307m ³ /hr, 217m, 280kW	3sets	2000
	SLP 46,880m ³ /hr, 13.3m, 2,350kW	2sets	1999
	CWP 23,440m ³ /hr, 6.5m, 600kW	4sets	1999
TANGJIN	BFP 1,078m ³ /hr, 2,741m	8sets	1999
	BFP-S 526m ³ /hr, 2,249m, 5,470kW	4sets	1999
	CDP 735m ³ /hr, 113m, 330kW	6sets	1998
	CBP 735m ³ /hr, 226m, 720kW	6sets	1998

Major Supply Records - Overseas

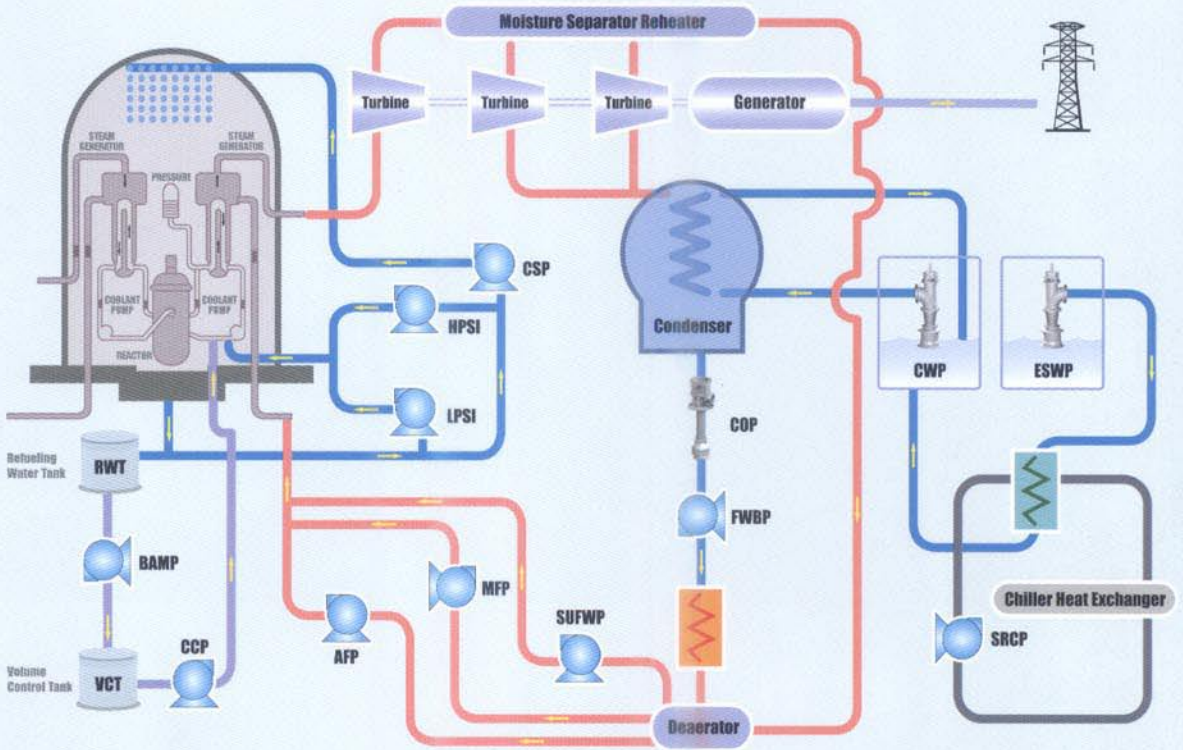
Major Customer	Specifications	Unit	Delivery
Sohar/Oman	BFP 475m ³ /hr, 1,075m, 1,900kW	17Set	2005
	BFP 475m ³ /hr, 1,075m, 1,900kW	4Set	2005
	CDP 333m ³ /hr, 142m, 165kW	2Set	2005
	DCP 213m ³ /hr, 119m, 110kW	1Set	2005
MAPNA/IRAN	CEP 850m ³ /hr, 230m, 745kW	44sets	2004-2007
Central Electricity Generating Co./ REHAP Project/ JORDAN	BFP 95m ³ /hr, 1,381m, 620kW	6sets	2004
	CEP 542m ³ /hr, 122m, 270kW	2sets	2004
Ramagundam STPP NTPC/INDIA	CWP 30,000m ³ /hr, 26m, 2,600kW	3sets	2003
Nippon paper/ JAPAN	BFP 108m ³ /hr, 825m, 410kW	2sets	2003
Colone-B/MACAO	CWP 12,500m ³ /hr, 15m, 1,400 kW	2sets	2002
EPOCOR CANADA	BFP 810m ³ /hr, 3,090m, 11,000kW	3sets	2002
UMIM AL NAR/UAE	BFP 400m ³ /hr, 246m, 420kW	6sets	2001
BARIA CAPP VIETNAM	BFP 81.1m ³ /hr, 1,012m, 350kW	4set	2001
FARS CAPP/IRAN	CEP 538m ³ /hr, 73m, 150kW	6sets	2000

Major Supply Records - Nuclear Power Plant

Major Customer	Specifications	Unit	Delivery
YOUNGGWANG	CWP 38,948m ³ /hr, 14.2m, 2,150kW	12sets	1999
	TBOCWP 6,018 m ³ /hr, 31m, 672kW	4sets	2000
ULCHIN	HPSI 205m ³ /hr, 869m, 745kW	6sets	2002
	LPSI 976m ³ /hr, 102m, 448kW	6sets	2002
	CDP 2,164m ³ /hr, 338m, 2,700kW	6sets	2000
	FWBP 3,451m ³ /hr, 408m, 5,300kW	6sets	2000
	CWP 29,864m ³ /hr, 9.6m, 1,194kW	6sets	1995
	CWP 29,864m ³ /hr, 9.6m, 1,194kW	6sets	1994

Nuclear Power Plant

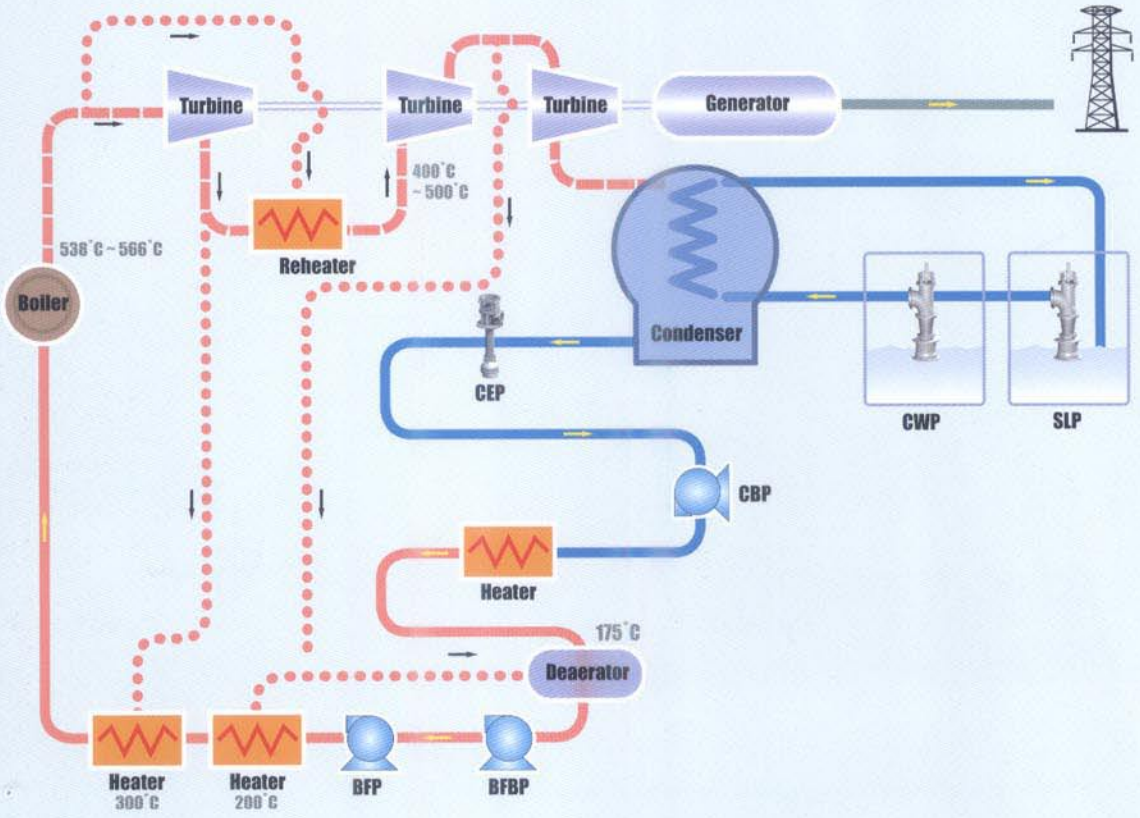
[Pressurized Water Reactor]



COP	Condensate Pump
CCP	Centrifugal Charging Pump
HPSIP	High Pressure Safety Injection Pump
LPSIP	Low Pressure Safety Injection Pump
CSP	Containment Spray Pump
CVCS	Chemical Volume Control System Pump
ESWP	Essential Service Water Pump
SRCP	Safety Related Centrifugal Pump



Thermal Power Plant



CWP	Circulating Water Pump
SLP	Seawater Lift Pump
BFP	Boiler Feedwater Pump
BFBP	Boiler Feedwater Booster Pump
CEP	Condensate Extraction Pump
CBP	Condensate Booster Pump

